



Benefits:

- ☑ Equipped as Medical Missionary
- ☑ Use in Health Practice/Consultation
- ☑ Establish & Run Sanitarium
- ☑ Understand Health through Body Chemistry
- ☑ Understand the cause and effect of illness
- ☑ Equipped to work with any health condition intelligently
- ☑ No more need to guess with your health
- ☑ Non-dependence upon Blood tests, or symptoms to know your state of health
- ☑ Monitor success of health program
- ☑ Convert the 8 Laws (*Lifestyle*) into Body chemistry numbers.
- ☑ Make health programs according to BC #s, not according to disease.

For more information or to register contact:

Cossil Lewis, MS, ND, CNC.

Christian Health Education Ministry
P. O. Box 853
Camden, Tennessee 38320
1 - 731 - 584 - 2153

betterliving@christianhealtheducation.com
www.christianhealtheducation.com

Medical Missionary & Sanitarium Work Training



“We have come to a time when every member of the church should take hold of medical missionary work.”
Testimonies, Vol.7, p. 62

“As religious aggression subverts the liberties of our nation, those who would **stand for freedom of conscience** will be placed in unfavorable positions. For their own sake, they should, while they have the opportunity, become **intelligent** in regard to **disease, its causes, prevention, and cure**. All those who do this will find a field of labor anywhere.”

Counsels on Health, p. 506.



What you will learn:

- How to analyze the body Chemistry and plan a nutritional and lifestyle program based on the numbers.
- Learn how and why nutritional deficiencies affect the organs and tissues and produce disease.
- How to use Natural Remedies (hydrotherapy, poultices, herbs etc.) to assist nature in her effort to expel impurities and establish balance.
- How the violation of Natural Laws affect the body chemistry and produce disease.
- How to use juices, teas, foods and supplements to improve the body chemistry and restore health and wellness.
- Learn all about the MMS protocols
- How to establish a home-style sanitarium.
- How to make adjustments to the body so that the nerve energy may flow to the organs without any obstruction.

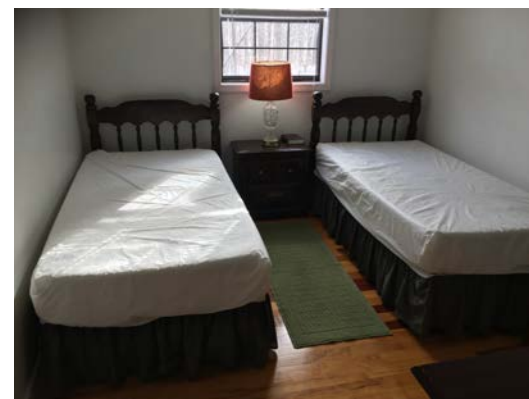


Where: C.H.E.M.
846 Williams Grove Rd
Camden, TN 38320

Total Cost: \$1184.00

Details:

Course: \$699.00
(See accommodation below)



Accommodation I: \$485.00

*(Room and Board includes 2 meals a day).
Bring your own bedding.*

Lab Equipment: L.E. may be purchased before the class so that you may learn how to use your own equipment. But it is not required in order to attend the seminar.



Details:

For Information on the next training class, see insert or visit our website.